

# REPORTS

## Experimental Studies of Impacts of Harbour Sediments Resuspension to Marine Invertebrates Larvae: Bioavailability of Cd, Cu, Pb and Zn and Toxicity

D. FICHET\*, G. RADENAC and P. MIRAMAND

Laboratoire de Biologie et Biochimie Marines, E.A. 1220, Université de La Rochelle, 15 Rue de Vaux de Foletier, 17026 La Rochelle Cedex, France

The larvae of three marine species (*Artemia salina*, *Crassostrea gigas*, *Paracentrotus lividus*) reared within the suspended particulate phases of contaminated sediments from harbours were used in bioassays firstly to assess their ability to accumulate four metals (Cd, Cu, Pb, Zn) and secondly to show the toxicity of such rearing media by recording delays in growth and possible abnormal larval development. The results show that resuspension processes of dredged harbour sediments may induce both a release of Cd, Cu and Pb which are bioavailable for larvae (levels of bioaccumulation depending on the species) and biological perturbations, i.e. abnormal development in *C. gigas* and *P. lividus* larvae for the more contaminated sediments and growth inhibition in all three larvae for slightly contaminated sediments. The concentrations of Pb reached in the *C. gigas* D-shaped larvae and the *P. lividus* pluteus were unusually high; in contrast, Zn was not accumulated by the three species. The impact of dumping operations thus appears to depend both on the metal considered and on the larvae used in such tests. In this context, Pb seems a more worrying metal than Zn and *C. gigas* and *P. lividus* are better indicator species than *A. salina* larvae. © 1998 Elsevier Science Ltd. All rights reserved

**Keywords:** heavy metals; bioavailability; toxicity; *Crassostrea gigas*; *Paracentrotus lividus*; larval development.

The marine pollution risk related to dredging activities has received greater attention over the last 20 years, especially in countries bordering the north-eastern Atlantic Ocean (Van Der Burgt, 1994). The bottom sediments involved in these dredging operations are usually considered the final repository of the major part of pollutants discharged into aquatic ecosystems. These toxics are present in the sediment as inorganic (heavy metals) or organic forms (PAHs, pesticides, PCBs) and can be adsorbed onto either mineral or organic particles, especially heavy metals (Robbe, 1984). The physical and chemical features of the sediment, such as the distribution of particle grain size, pH, salinity, organic matter content and oxidization conditions exert considerable influence on the chemical forms of the metal elements (Bourg, 1987; Broman *et al.*, 1994) and thus on their bioavailability. A large number of various sediment bioassays and bioaccumulation studies point out that heavy metals become more bioavailable during oxidization of the sediment as occurs, for instance, during dredging processes (Darby *et al.*, 1986; Förstner, 1989; Salomon and Förstner, 1984; Wollast, 1989).

After the Oslo (1972) and London (1986) agreements which aimed to prevent marine pollution caused by dredging operations, a study group comprising experts from the responsible ministries and national research organisms was created in France to report on the influence of dredging activities upon the marine environment (GEODE Programme). This group proposed reference values for metals and PCB concentrations allowing the classification of harbour sediments according to their levels of contamination

\*Corresponding author. E-mail: dfichet@cri.univ-lr.fr.

(Anonymous, 1996). The basis for these guideline values was the concentrations of heavy metals (As, Cd, Cr, Cu, Hg, Ni, Pb, Zn) and PCB recorded between 1986 and 1990 within sediments originating from larger French harbours. From these data, a distribution curve (95% extrapolated) was obtained and a median value (Md) was calculated for each toxin. For instance, the median values are  $0.6 \mu\text{g g}^{-1}$  dry weight of sediment (DW) for Cd,  $22.5 \mu\text{g g}^{-1}$  DW for Cu,  $50 \mu\text{g g}^{-1}$  DW for Pb and  $138 \mu\text{g g}^{-1}$  DW for Zn. According to such a classification, the processes of dumping of dredged sediments were defined: if the concentrations of all these toxics remained under 2Md, the disposal of dredged sediments was allowed into offshore sites, without further study. If the concentrations were higher than 4Md (level 2), the dumping of dredged sediments may be prohibited in an offshore site. For metal or PCB concentrations ranging between 2Md and 4Md (level 1), complementary studies, based on a biological assessment of the toxicity of the dredged sediments (bioassays), has to be carried out before allowing the dumping or not.

In this context, this study focused on the development of sensitive biological tests to identify metal contamination and sediment toxicity. Regularly dredged sediments from harbours of the French Atlantic coast were used in this study. The aim of this work was to observe the behaviour of the larvae of different marine species (*Artemia salina*, *Crassostrea gigas*, *Paracentrotus lividus*) under conditions approximating a dumping process. Two processes were identified. 1. The respective abilities of the early larval forms to accumulate four metals (Cd, Cu, Pb, Zn) over a short exposure time with the suspended particulate phase of harbour sediments showing different degrees of contamination; in this way, the bioavailability of each metal was assessed for each larva. 2. The toxicity of such rearing media was assessed by observing delays in growth and possible abnormalities during the development of each larval species.

## Materials and Methods

### *Collection of the sediments and preparation of the suspended particulate phases*

Sampled sediments were collected with a  $0.1 \text{ m}^2$  grab from the bottom (top 20 cm) of two French harbours: La Pallice, an industrial port and Les Sables d'Olonne, a fishing port. After collection, sediments were stored in clean polyethylene bags and laboratory treatments carried out without delay. Subsamples of sediment were prepared for physical parameters and metal content analyses. Three replicates were prepared for the bioassays: fresh sediments were placed in a clean 5 l glass beaker and mixed with  $0.2 \mu\text{m}$  natural filtered seawater. This dilution ( $100 \text{ g l}^{-1}$  wet weight) was close to the dilution which occurs with the hydraulic suction dredging method used locally (Radenac, 1996). The

diluted sediments were then stirred strongly for 8 h followed by 2 h of undisturbed settling. The supernatants were then coarsely sieved ( $25 \mu\text{m}$ ) to obtain the suspended particulate phases of the sampled sediments. Three controls used natural filtered seawater. Lastly, controls and suspended particulate phases were placed in clean 5 l beakers and constituted the larval rearing media. This method was derived from a procedure described by Melzian (1989) ('suspended particulate phase bioassay') and was chosen first to model the local dredging processes but also because it is reported that sediment particles physically interfere with the development of organisms (Davis, 1960; Davis and Hidu, 1969).

### *Selection of tested sediments*

After the preliminary physical analyses, the different sediments were selected according to two criteria: firstly, the homogeneity of their percentage silt/clay and organic matter (which provide the main sources of available metals); and secondly, the presence of a heavy metal concentration gradient (Table 1).

As metal analysis showed, levels of metal contamination of one sediment (according to the GEODE classification) could be different for each metal studied. As a consequence, the global GEODE level of contamination was defined as the higher GEODE level among the four metals: Cd, Cu, Pb, Zn (Table 1).

The coefficient of variation for all the trials was 14.5% for organic matter content and 17.9% for the percentage silt/clay, even if the sediments were characterized by different global levels of metal contamination (Table 1). Despite slight differences between the four metal concentration classes within the same sediment, the 22 tested sediments were characterized by a significant correlation between the four heavy metals analysed (Table 2). The possible effects of synergism or antagonism between metals would therefore be the same for every class of sediments.

### *Larval rearing and toxicity test*

Three marine invertebrates species were selected: *Artemia salina* (Crustacea, Branchiopoda), *Crassostrea gigas* (Mollusca, Bivalvia) and *Paracentrotus lividus* (Echinodermata, Echinoidae). These invertebrate larvae have many advantages: widespread geographical distributions; easily handled and reared under laboratory conditions (need no feeding during the early development period, for example); rapid development; numerous references in the literature to facilitate meaningful comparisons (Chapman and Morgan, 1983; His and Robert, 1985, 1986; Kobayashi, 1971; Okubo and Okubo, 1962; Pagano and Rom  na, 1991; Vanahaecke *et al.*, 1980; Woelke, 1967, 1972).

In each experiment, the salinity (34‰), pH (8.1) and temperature (see below) of the rearing media were controlled before the introduction of the larvae. The

TABLE 1

Physical parameters: % H = % water content, % O-M = % organic matter, % S/C = % silt/clay, heavy metal concentrations ( $\mu\text{g g}^{-1}$  dry weight) and corresponding GEODE levels (metal specific and global) of the tested sediments. The global GEODE level of contamination was defined as the higher GEODE level among the four metals. *C. gigas*: *Crassostrea gigas*; *P. lividus*: *Paracentrotus lividus*; *A. salina*: *Artemia salina*. Md: median of metal concentrations ( $\mu\text{g g}^{-1}$  dry weight), C.V.: coefficient of variation.

Bioassay	Physical parameters			Heavy metal concentrations				Corresponding GEODE levels				
	%H	%O-M	%S/C	Cd	Cu	Pb	Zn	Cd (Md = 0.6)	Cu (Md = 22.5)	Pb (Md = 50)	Zn (Md = 138)	Global
<i>C. gigas</i>	63.5	13.8	75.3	5.77	216	390	1916	> 4Md	> 4Md	> 4Md	> 4Md	> 4Md
	60.6	12.1	89.0	2.44	116	122	1130	> 4Md	> 4Md	2Md < 4Md	> 4Md	> 4Md
	64.6	11.1	86.5	0.81	118	103	1066	Md < 2Md	> 4Md	2Md < 4Md	> 4Md	> 4Md
	67.8	12.9	69.0	0.77	204	57	355	Md < 2Md	> 4Md	Md < 2Md	2Md < 4Md	> 4Md
	64.8	14.2	79.0	5.08	177	178	918	> 4Md	> 4Md	2Md < 4Md	> 4Md	> 4Md
	69.3	11.2	95.0	0.52	34	54	205	< Md	Md < 2Md	Md < 2Md	Md < 2Md	Md < 2Md
	66.5	12.4	98.5	0.23	15	41	147	< Md	< Md	< Md	Md < 2Md	Md < 2Md
	56.4	10.3	50.8	0.36	32	37	137	< Md	Md < 2Md	< Md	< Md	Md < 2Md
	67.4	12.6	81.1	1.16	17	50	168	Md < 2Md	< Md	Md < 2Md	Md < 2Md	Md < 2Md
	46.3	6.9	82.0	0.17	11	30	107	< Md	< Md	< Md	< Md	< Md
<i>P. lividus</i>	36.0	9.4	61.4	0.26	15	39	137	< Md	< Md	< Md	< Md	< Md
	67.8	12.9	69.0	0.72	162	55	338	Md < 2Md	> 4Md	Md < 2Md	2Md < 4Md	> 4Md
	67.9	13.1	75.4	1.86	117	61	452	2Md < 4Md	> 4Md	Md < 2Md	2Md < 4Md	> 4Md
	64.8	14.2	79.0	4.95	183	178	645	> 4Md	> 4Md	2Md < 4Md	> 4Md	> 4Md
	56.4	10.3	50.8	0.30	32	31	128	< Md	Md < 2Md	< Md	< Md	Md < 2Md
<i>A. salina</i>	67.4	12.6	81.1	0.16	17	45	159	< Md	< Md	< Md	Md < 2Md	Md < 2Md
	69.0	12.6	99.1	3.68	143	125	732	> 4Md	> 4Md	2Md < 4Md	> 4Md	> 4Md
	67.5	11.3	91.8	2.63	126	161	572	> 4Md	> 4Md	2Md < 4Md	> 4Md	> 4Md
	72.0	12.9	92.6	0.57	50	63	242	< Md	2Md < 4Md	Md < 2Md	Md < 2Md	2Md < 4Md
	69.6	11.0	94.9	0.52	37	49	180	< Md	Md < 2Md	< Md	Md < 2Md	Md < 2Md
	70.6	13.8	98.1	0.26	26	42	185	< Md	Md < 2Md	< Md	Md < 2Md	Md < 2Md
	73.2	13.1	97.1	0.26	22	41	170	< Md	Md < 2Md	< Md	Md < 2Md	Md < 2Md
Mean	64.1	12.03	81.7									
C.V.	13.6	14.5	17.9									

rearing volumes were calculated to obtain the minimum of 10 mg DW of larvae required for heavy metal analyses, i.e. 5 l for the oyster and urchin bioassays and 500 ml for the Artemia.

Two criteria were chosen to evaluate the toxicity of the suspended particulate phases: the embryogenesis of the three species and the growth of *Crassostrea gigas* and *Paracentrotus lividus*.

Conditioned adult oysters, *Crassostrea gigas*, were induced to spawn in natural filtered seawater by thermal stimulation. Freshly collected oocytes and sperm were suspended in natural filtered seawater in a sterile glass beaker to achieve fertilization, facilitated by gentle stirring. The number of fertilized eggs was assessed and distributed among all the rearing media at a uniform value of 100 eggs per millilitre at  $24 \pm 1^\circ\text{C}$ . Breeding was stopped after 24 h. To determine the toxic effects of the suspended particulate phases of

each sediment on early larval development, three replicates (20 ml) of each trial were collected into plastic beakers and 100  $\mu\text{l}$  of 4% buffered Formalin was added. One hundred individuals per trial were observed under a microscope ( $\times 100$ ) to distinguish between D-shaped larvae and early stages of development, including eggs, morulae and trochophores. Additionally, the length and width of 10 individuals taken at random per trial were measured (Fig. 1).

Urchins, *Paracentrotus lividus*, were collected from the "Ile de Ré" during the natural spawning period. Spawnings were realized naturally in the laboratory, i.e. without induction. Eggs were suspended in natural filtered seawater (0.2  $\mu\text{m}$ ) and a small amount of a diluted sperm solution was added in order to avoid polyspermi. After each sperm addition, the fertilization rate was estimated. Sperm addition was stopped when the fertilization rate was  $> 90\%$ . Finally, fertilized eggs were distributed among all rearing media at  $24 \pm 1^\circ\text{C}$ . Breeding was halted after 48 h. After collecting the larvae (using the same method as in the oyster trial), the toxic effects of suspended particulate phases of each sediment were assessed on 100 individuals observed under a microscope ( $\times 40$ ) in order to discriminate the normal pluteus larvae from undeveloped and abnormal ones. In addition, 10 individuals per trial were used at random to measure the length of the normal pluteus larvae (Fig. 1).

TABLE 2

Correlation matrix of Cd, Cu, Pb and Zn concentrations from the sediment (\* indicates a probability correlation  $< 0.05$ ,  $n = 22$ ).

	Cd	Cu	Pb
Zn	0.793*	0.708*	0.908*
Pb	0.888*	0.716*	
Cu	0.770*		

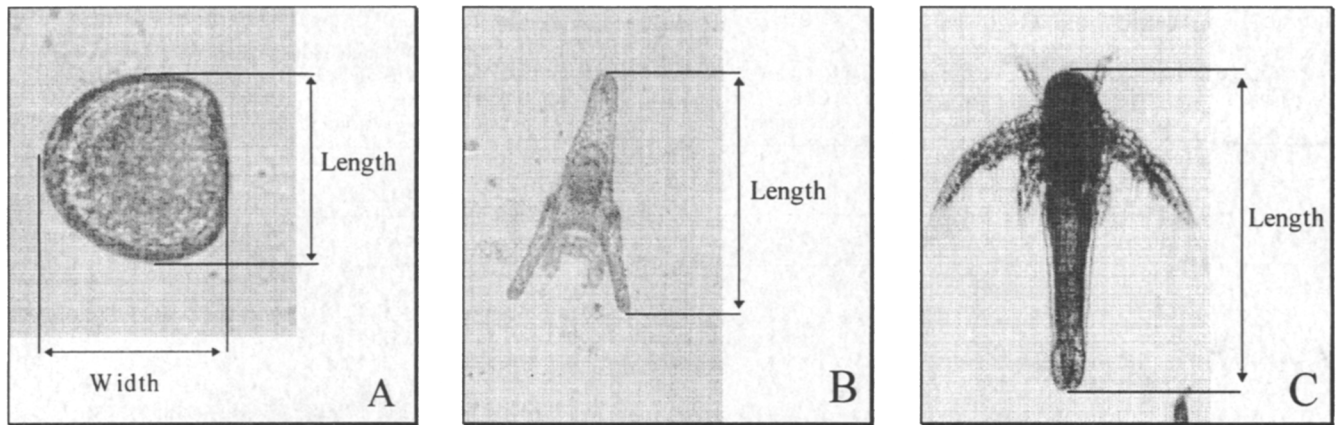


Fig. 1 Biometrical parameters used in the bioassays: (A) *Crassostrea gigas* D-shaped larvae; (B) *Paracentrotus lividus* pluteus larvae; (C) *Artemia salina* nauplius larvae.

For the bioassay on *Artemia salina*, freeze-dried eggs were hydrated for 1 h in freshwater and then immersed in bleach-water (30%) for 7 min to partially digest their envelopes. They were then distributed among all rearing media at  $20 \pm 1^\circ\text{C}$ . After 48 h of development, three replicates (5 ml) of each trial were collected (using the same method as in the oyster and urchin trials). Additionally, 10 individuals per trial were randomly observed under a microscope ( $\times 20$ ) in order to measure the length of the nauplius (Fig. 1) after the first moult.

#### Analytical methods

For each sediment, subsamples were prepared for physical parameter and metal content analyses. The percentage organic matter was estimated by the loss of weight on ignition at  $450^\circ\text{C}$  for 12 h. The particle grain size distribution was determined by wet sieving using a  $56 \mu\text{m}$  sieve to separate the coarse and fine fractions which were then dried at  $80^\circ\text{C}$  and weighed. The loss of weight gave the water content percentage.

For the bioassays, all the larvae were removed from each rearing medium and their Cd, Cu, Pb, Zn concentrations determined. For this determination, larvae were dried at  $80^\circ\text{C}$ . Dry samples were then digested with a mixture of nitric/perchloric acids ( $\text{HNO}_3$  14 N;  $\text{HClO}_4$  17 N) at  $80^\circ\text{C}$  for 12 h. After evaporation, the dry residues were dissolved in 0.3 N  $\text{HNO}_3$  and stored at  $4^\circ\text{C}$  until analysis. Metal concentrations were determined by flame or furnace atomic absorption using a Varian Spectra AA250 atomic absorption spectrophotometer. Deuterium background correction was used. Standard samples of sediment (Quasimeme: QTM007MS) and fish muscle (IAEA: MA-A-2) were used as controls and analysed according to the same protocols. Data obtained from the standards were in agreement with certified values (Table 3).

Analyses of hydrocarbons and PCB (two Arochlor congeners) were performed with a GC/MS method by

a certified laboratory (Laboratoire Départemental d'Hygiène, La Rochelle, France).

#### Data processing and statistical analyses

The heavy metal concentrations within larvae and sediments (grouped according to their global GEODE level) were given as arithmetic mean values  $\pm$  standard deviations for each GEODE level of the considered metal. A biota-sediment accumulating factor (BSAF) was calculated according to Morisson *et al.* (1996):

$$\text{BSAF} = \text{larval concentrations/sediment concentrations.}$$

The results of the toxicity bioassays were expressed as arithmetic mean values  $\pm$  standard deviations for each global GEODE level of the tested sediment.

The homogeneity of the variances was tested with a Bartlett's test. In the case of heterogeneity, the data were log-transformed (for concentrations and length data) and arcsin-transformed for the data expressed as percentages. One-way ANOVA, with the GEODE levels (metal-specific or global) as fixed factors, was used for testing differences observed in larval concentrations and in the toxicity tests. Differences were accepted as significant at  $p < 0.05$  and, in such a case, a comparison between all pairwise values was tested using a Fisher's LSD procedure. In the absence of homogeneity of variance (height of *Crassostrea gigas*

TABLE 3

Concentrations ( $\mu\text{g g}^{-1}$  DW) for Cd, Cu, Pb and Zn in reference materials.

	Sediment QTM007MS		Fish muscle MA-A-2	
	Certified values	Present study	Certified values	Present study
Cd	$1.4 \pm 0.3$	$1.6 \pm 0.1$	$0.066 \pm 0.004$	$0.07 \pm 0.01$
Cu	$23.5 \pm 2.4$	$22.0 \pm 0.6$	$4.0 \pm 0.7$	$4.5 \pm 0.8$
Pb	$47.5 \pm 7.6$	$48.1 \pm 1.0$	$0.58 \pm 0.07$	$0.65 \pm 0.1$
Zn	$165 \pm 13$	$158 \pm 16$	$33 \pm 1$	$35 \pm 2$

larvae), a Kruskal–Wallis non-parametric test was used.

**Results**

*Metal concentrations*

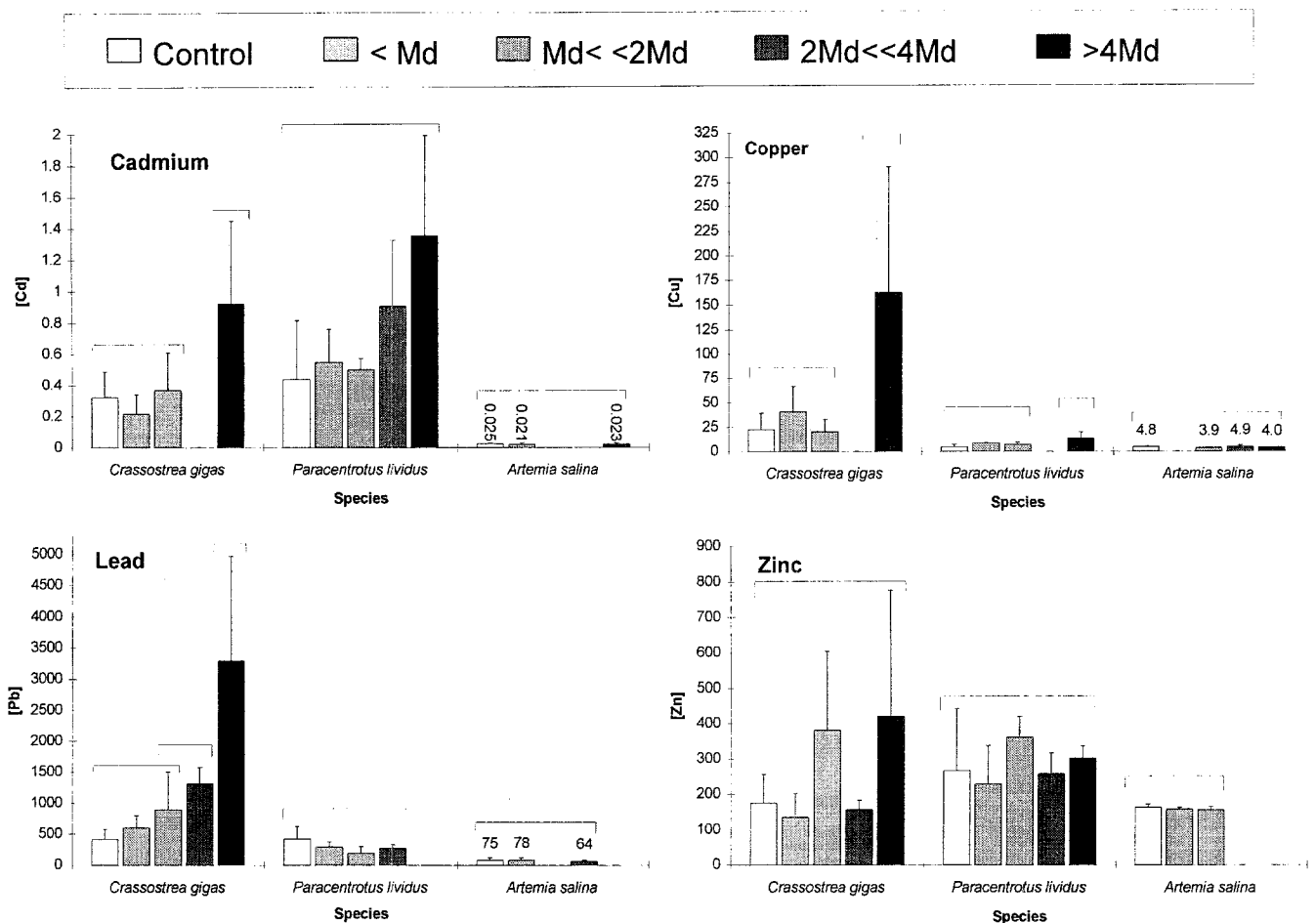
The heavy metal concentrations ( $\mu\text{g g}^{-1}$  DW) recorded within larvae of *Artemia salina*, *Crassostrea gigas* and *Paracentrotus lividus* and after either 48 h or 72 h of exposure to the suspended particulate phases of different harbour sediments are given in Fig. 2. The statistical analysis showed that Cd and Cu concentrations were significantly higher in oyster larvae reared in a >4Md medium than those in slightly contaminated media or the controls. Significant differences in Pb concentrations for the oyster larvae were also shown first between the control and the 2Md<<4Md media and second between the 2Md<<4Md and >4Md media. For urchin larvae, a significant difference was only observed for Cu between the >4Md and the other tested media and controls. The metal concentra-

tions remained homogeneous in *Artemia salina* larvae in all suspended particulate phases of the sediments and the controls.

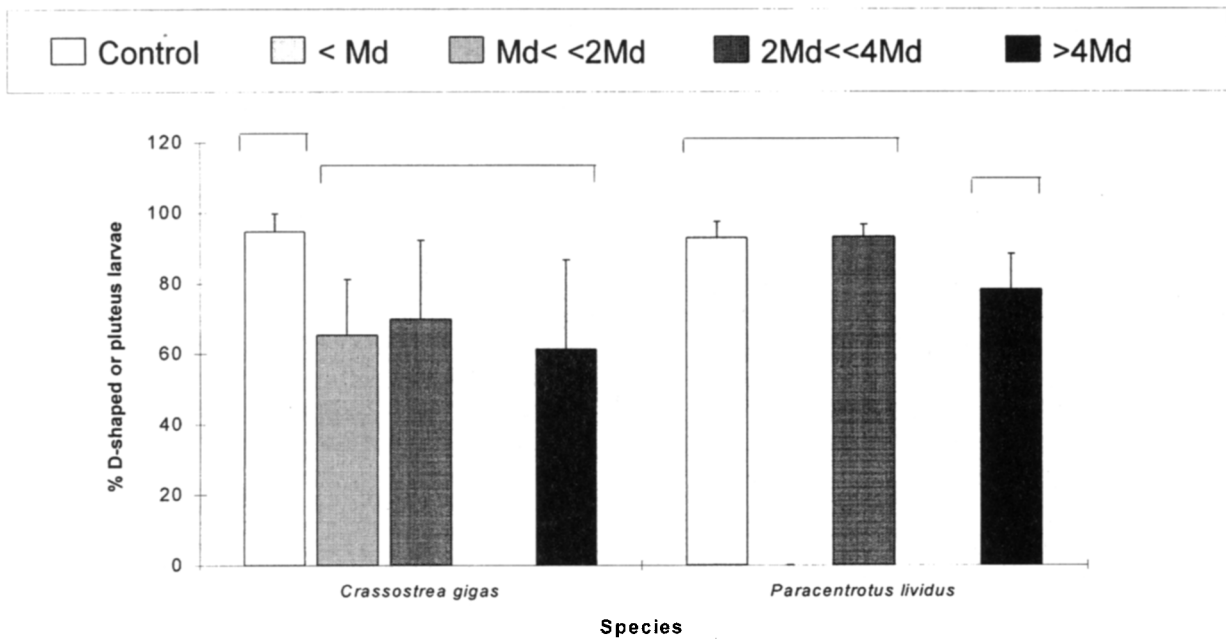
*Toxicity tests*

The effects induced by the suspended particulate phases of sediments on both parameters used for the toxicity assessment (embryogenesis and larval growth) are given in Figs 3 and 4. Significant differences in the embryogenesis of *Crassostrea gigas* larvae (as evidenced by the proportion of D-shaped larvae) occurred between the control and all the suspended particulate phase media but no significant differences were obtained between each contamination level (Fig. 3). The larval growth parameters (length and width, Fig. 1) were statistically different from the control for the contamination levels > Md value, but significant differences were also observed between the >4Md and <2Md media (Fig. 4).

For the *Paracentrotus lividus* bioassay, there was no significant difference between the percentage of



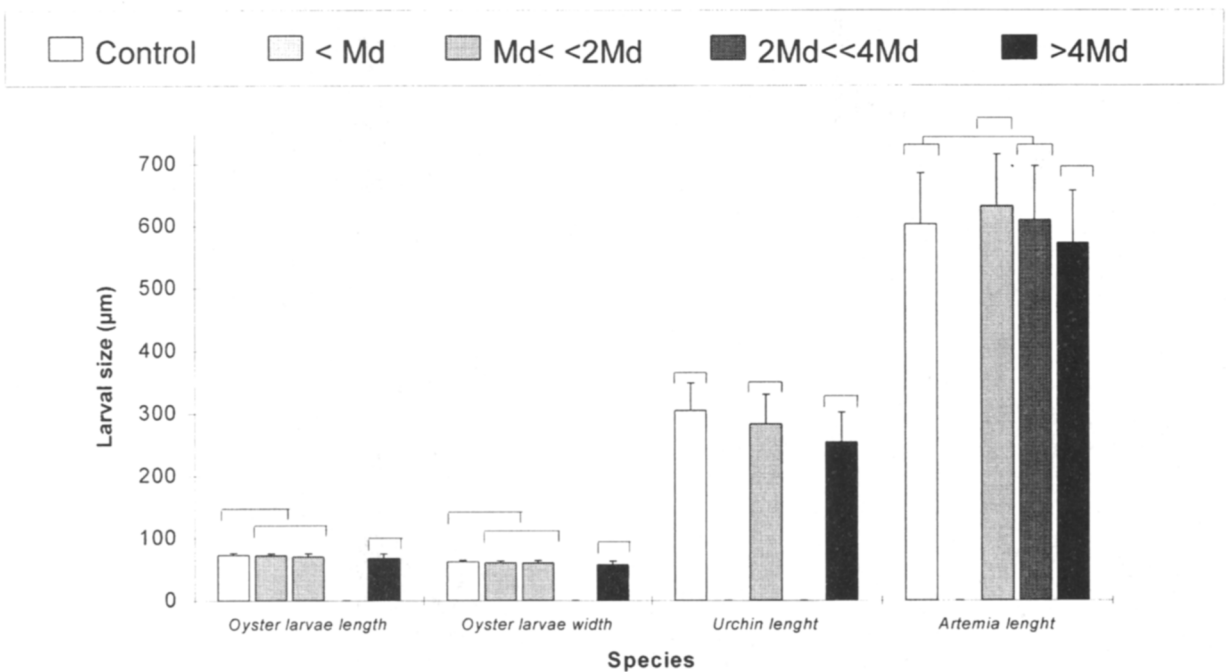
**Fig. 2** Cd, Cu, Pb, Zn concentrations ( $\mu\text{g g}^{-1}$  DW) of *Crassostrea gigas*, *Paracentrotus lividus*, and *Artemia salina* larvae in relation to GEODE levels (metal specific) of the suspended particulate phases. Error bars represent  $\pm$  standard error and, for each species, values (log-transformed) not significantly different from one other (Fisher test, ANOVA,  $p < 0.05$ ) are grouped by a common overhead line.



**Fig. 3** Average percentage development ( $\pm$  standard deviation) of normal larvae (D-shaped or pluteus) according to the global GEODE levels of the suspended particulate phases of the tested sediments. The values (arcsin-transformed) which are not significantly different (Fisher test, ANOVA,  $p < 0.05$ ) are grouped by a common overhead line.

normal-developed plutei in the control and the <2Md medium, whereas the >4Md medium induced the

development of more abnormal larvae (statistically significant,  $p < 0.05$ ) (Fig. 3). The biometric study



**Fig. 4** Average sizes ( $\pm$  standard deviation) of normal larvae (D-shaped, pluteus or nauplii) according to the global GEODE levels of the suspended particulate phases of the tested sediments. The values (log-transformed) not significantly different (ANOVA with data followed by Fisher test for urchin and Artemia or Kruskal-Wallis test for oyster) from one another are grouped by a common overhead line.

pointed out significant differences in lengths between each rearing medium; the growth performance being inversely proportional to contamination level (Fig. 4).

In the *Artemia salina* bioassay, no obvious developmental abnormality was detected but the length of the larvae (nauplius stage) decreased significantly ( $p < 0.05$ ) with an increase in the contamination level of the resuspended sediments (Fig. 4).

## Discussion

The levels of heavy metal concentrations at the end of the experiments (Fig. 2) appear very different between metals and between species: in *Artemia salina* nauplii, the four metals were poorly accumulated and the concentrations were within the range of concentrations already recorded for copepods and microzooplankton mainly made up of crustacean species (Table 4).

In *Crassostrea gigas* and *Paracentrotus lividus* larvae, Cd and Cu were more concentrated than in the *Artemia* nauplii. Moreover, Cd, Cu, and Zn concentrations in oyster and urchin larvae were close to those measured in the gonads of adults used in this experiment for the spawning stimulation and remained within the range of levels recorded for adults collected in the same and in other areas (Table 4). For these metals, the biota-sediment accumulating factor remained as  $< 1.5$  for Cd, Cu, and Zn (Fig. 5). These values are lower than those recorded in field studies (Amiard *et al.*, 1994; Thomson, 1982) where adults were collected (Table 5). The contact between the larvae and the metals was, however, short in our experiment (48 h).

The concentrations of Pb are noteworthy (Fig. 2). In *Crassostrea gigas* D-shaped larvae, they appear high, ranging from  $413 \mu\text{g g}^{-1}$  DW for the control to  $3290 \mu\text{g g}^{-1}$  DW for the  $> 4\text{Md}$  medium. Such values are unusual for marine organisms, and far higher than concentrations found in adults and in  $\gamma$  gonads of oysters (Table 4). Nevertheless, such values have been recorded previously in other molluscs, such as the gastropod *Policines sordidus* (Ying, 1993). Pb concen-

trations in the pluteus of *Paracentrotus lividus* were far higher than those measured in the gonads of  $\gamma$  individuals used in this experiment and in other adult urchins (Table 4). In the present study, Pb bioaccumulation was not through the food chain, although this is considered the principal input of Pb into *Nephtys* sp. (Polychaeta) and *Echinocardium cordatum* (Echinoidea) according to Kersten and Kröncke (1991). The biota-sediment accumulating factor of Pb ( $12.8 \pm 4.3$  for *Crassostrea gigas*,  $4.8 \pm 4$  for *Paracentrotus lividus* and  $1.1 \pm 0.8$  for *Artemia salina*) were higher than those recorded in field studies focused on adults exposed over a longer period (Table 5).

Heavy metal bioaccumulation in larvae may be discussed in relation to their bioavailability when released during sediment resuspension. Despite the similarities in experimental conditions (i.e. physical characteristics of the sediments (Table 1) and time of exposure), significant differences in metal concentrations were noticed between the controls and larvae exposed to the suspended particulate phases of sediments. Cd, Cu and Pb concentrations in *Crassostrea gigas* D-shaped larvae and Cu concentration in *Paracentrotus lividus* pluteus larvae were higher in the trial using strongly contaminated sediments ( $> 4\text{Md}$ ). These observations suggest a release of bioavailable chemical forms of these metals from the sediment during the resuspension phase. The bioavailability was, moreover, different according to species and metals.

In the case of Zn, all larval concentrations were homogeneous at every sediment contamination level. This homogeneity does not seem to result from the absence of Zn being released from the sediments as observed in other experiments (Slotton and Reuter, 1995), but could be due to the release of a form of Zn non-bioavailable to the early larval stages.

In our study, Cu was accumulated by *Crassostrea gigas* D-shaped larvae after two days of exposure to the supernatants of natural sediments (Fig. 2). This bioavailability has already been observed in oyster adults exposed for several weeks to artificially contaminated suspended particles (Ettajani *et al.*, 1992). Oyster

TABLE 4  
Ranges of heavy metal concentrations ( $\mu\text{g g}^{-1}$  DW) in bivalves, echinoids and crustaceans recorded in other studies.

Species (organs)	Cd	Cu	Pb	Zn	Area	References
<i>C. gigas</i> (adults, soft tissues)	3–6.5	150–290	1.5–1.8	2400–2800	Sampling area	RNO, 1993
<i>C. gigas</i> ( $\gamma$ gonad)	0.38	31	0.25	1152	Marennes Bay, France	Present study
<i>P. lividus</i>	$< 0.3$ –2.8	0.8–34.8	$< 1.0$ –33.1	$< 1$ –710	Mediterranean Sea	Augier <i>et al.</i> , 1992
<i>E. parma</i>	0.143	6	2.37	20.1	New York Bight	Steimle <i>et al.</i> , 1994
<i>S. neumayerii</i> (gonads)	0.25–0.80	1.24–3.29	—	18.4–56.1	Antarctic	de Moreno <i>et al.</i> , 1997
<i>P. lividus</i> ( $\gamma$ gonad)	0.68	—	2.47	116	Isle of Ré, France	Present study
Copepods	1.6	32.4	2	403	Bay of Cherbourg	Miramand <i>et al.</i> , 1996
Copepods	$5.5 \pm 3.1$	$47 \pm 27$	$28 \pm 18$	$480 \pm 190$	Bay of Seine	Miramand <i>et al.</i> , 1996
Mixed zooplankton	$2.4 \pm 0.4$	$16.6 \pm 3.1$	—	$424 \pm 122$	Mediterranean Sea	Fowler, 1986
Mixed amphipods	0.093	20.9	13.8	43.8	New York Bight	Steimle <i>et al.</i> , 1994
<i>T. tridentatus</i> (eggs)	0.01	20	ND	32	Japan	Kannan <i>et al.</i> , 1995

*E. parma*: *Echinarachinus parma*; *P. lividus*: *Paracentrotus lividus*; *C. gigas*: *Crassostrea gigas*; *S. neumayerii*: *Sterechinus neumayerii*; *T. tridentatus*: *Tachypleus tridentatus*; ND: not detected; —: not measured.

larvae also accumulated Cd in the most polluted medium; such an observation has already been made for other adult bivalves, i.e. *Macoma balthica*, exposed for two days to Cd contaminated water (Bordin *et al.*, 1996). The trend to accumulate Cd in *Paracentrotus lividus* pluteus larvae (though not statistically significant) has already been shown for adults (Warnau *et al.*,

1995). Cd and Cu were not bioavailable to *Artemia salina* nauplii (Fig. 2), contradicting results obtained in field studies on crustaceans (Depledge *et al.*, 1993; Rule and Alden, 1990).

In the case of Pb, Izquierdo *et al.* (1997) showed that 30% of this metal was bound in the sediment to the carbonate fraction in a proportion equivalent to the

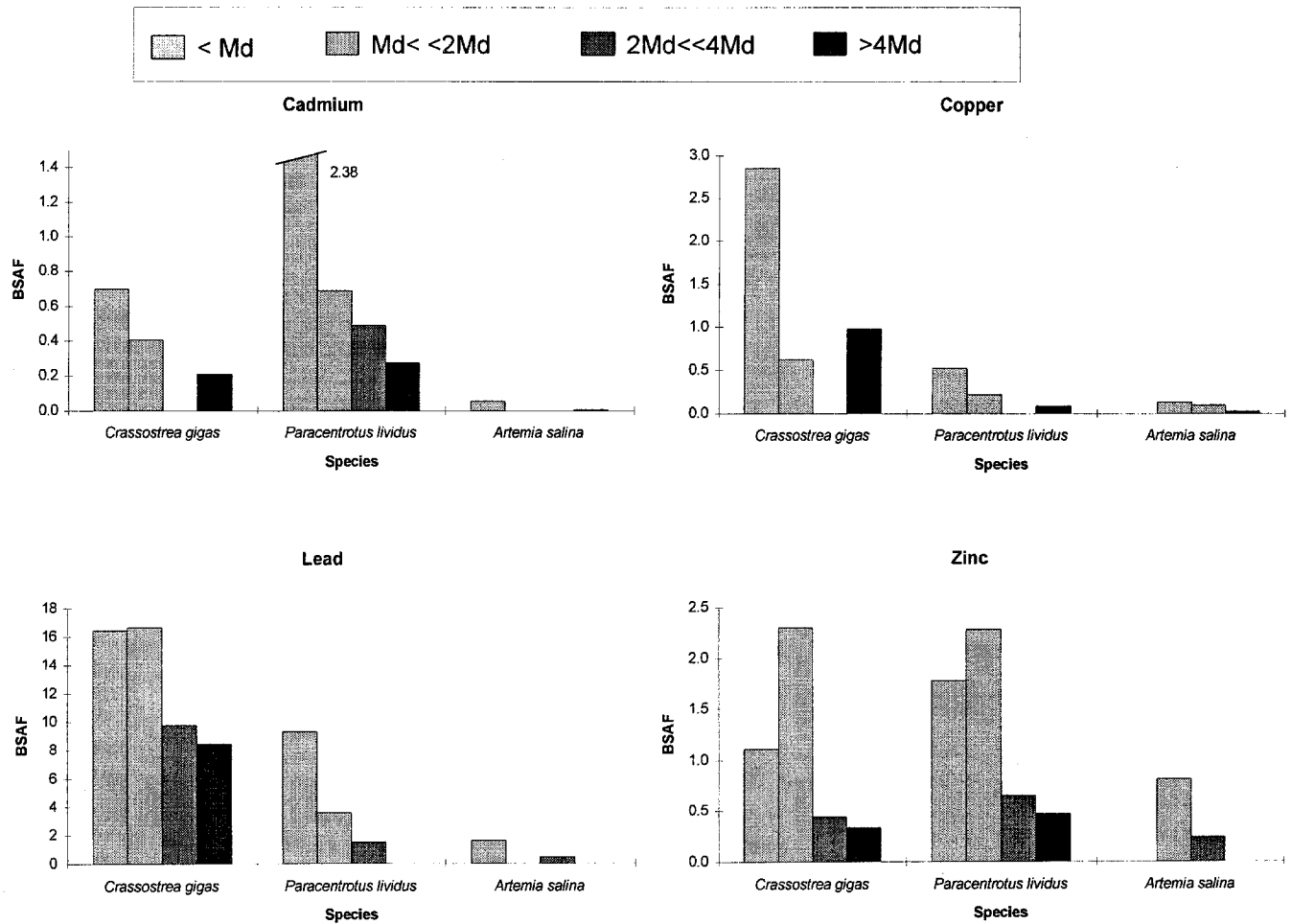


Fig. 5 Cd, Cu, Pb, Zn biota-sediment accumulating factor (BSAF = biota concentration/sediment concentration) of *Crassostrea gigas*, *Paracentrotus lividus*, and *Artemia salina* larvae in relation to GEODE levels (metal specific) of the suspended particulate phases of the sediments.

TABLE 5

Biota-sediment accumulating factor values (BSAF = biota concentration/sediment concentration) recorded in bivalves and crustaceans during field studies.

Species (organs)	Cd	Cu	Pb	Zn	Study	References
<i>M. edulis</i> (adults, soft tissues)	12.1	1	0.1	5	Field study	Thomann <i>et al.</i> , 1995
<i>C. virginica</i> (adults, soft tissues)	35.6	19.2	0.04	59.2	Field study	Thomann <i>et al.</i> , 1995
<i>M. galloprovincialis</i> (adults, soft tissues)	—	1.08	0.07	2.19	Field study	Puente <i>et al.</i> , 1996
<i>S. plana</i> (adults, soft tissues)	0.81	0.67	0.28	2.65	Field study	Saiz-Salinas <i>et al.</i> , 1996
<i>M. edulis</i> (adults, soft tissues)	4	0.42	0.2	0.77	Field study	Radenac, 1996
<i>P. pugio</i> (adults, soft tissues)	—	18.9	0.63	1.7	Field study	Rule, 1985

*M. galloprovincialis*: *Mytilus galloprovincialis*; *S. plana*: *Scrobicularia plana*; *C. gigas*: *Crassostrea gigas*; *M. edulis*: *Mytilus edulis*; *C. virginica*: *Crassostrea virginica*; *P. pugio*: *Palaemonetes pugio*; — : not observed.



organic fraction. The correlation between dissolved Pb in seawater and concentrations in the shells of *Mya arenaria* (Pitts and Wallace, 1994), *Cerastoderma edule* and *Venerupis aurea* (Auernheimer *et al.*, 1996) demonstrated the bioavailability of Pb when this metal is combined with CaCO<sub>3</sub>. Furthermore, the increase in Pb concentrations was related to a decrease in the size of the planktonic organisms, as noticed in other studies (Michaels and Flegal, 1990). The small body size (< 75 µm) of the oyster larvae and the formation of the first shell (prodissoconch I) may explain the high concentrations of Pb within the *Crassostrea gigas* D-shaped larvae. Conversely, the lower concentrations in *Paracentrotus lividus* and *Artemia salina* could be the consequence of a lower calcite metabolism related to the skeleton of the former larvae and of the cuticle in the latter larvae. Consequently, the resuspension process appears to be a source of bioavailable Pb; this bioavailability depending on the calcite metabolism of the organism under consideration. This bioavailability was observed in a previous study where an accumulation of Pb was recorded in the soft tissues of adult *Mytilus edulis* immersed around dredged material disposal sites in our study area (Radenac *et al.*, 1997).

For the four metals, the decrease in the biota-sediment accumulating factor according to metal contamination level of the sediment (Fig. 5) indicated that the amounts of metals accumulated by the larvae were not proportional to their concentrations within the sediment.

For the most contaminated sediments (> 4Md), the bioaccumulation of Cd, Cu and Pb has been shown to be concurrent with the toxicity of the corresponding suspended particulate phase (Figs 3 and 4). However, larval growth appears to be a more sensitive quality criteria of the rearing medium than observations of abnormalities in larval development. For less contaminated sediments (< 2Md), no statistically significant bioaccumulation of metals was recorded in the larvae (Fig. 2) but growth inhibition may be seen (Fig. 4). This could be due to the presence of other xenobiotics present in our sediments (Table 6), particularly PAH, which may induce toxic effects on invertebrate larvae (Meador *et al.*, 1990).

To conclude, the impact of the dumping operations appears to depend not only on the global GEODE level but also on the metal concentrations which create

the sediment classification. For example, for two sediments belonging to the same GEODE level, the sediment whose class was determined by Pb concentrations will have to receive more attention than the sediment whose class is determined by Zn. The assessment of the impact also depends on the species chosen in the bioassay: *Crassostrea gigas* and *Paracentrotus lividus* are better bioindicator species than *Artemia salina*.

In all cases, these results confirm the recommendations of GEODE which suggest taking maximum precautions before authorizing the dumping of highly contaminated sediments (> 4Md). They also show that resuspension of dredged material induces biological perturbations (i.e. growth inhibition) even in the case of slightly metal contaminated sediments. In this context, further studies would be useful to assess the impact of dumping of dredged sediments with a level of contamination between 2Md and 4Md.

This work was supported by a grant from the Regional Council of Poitou-Charentes. We would like to thank the 'Cellule de la Qualité des Eaux Littorales' of the 'Direction Départementale de l'Équipement de la Charente-Maritime' for their financial and technical support.

- Amiard, J.-C., Metayer, C., Baud, J.-P. and Ribeyre, F. (1994) Influence of some ecological and biological factors on metal bioaccumulation in young oysters (*Crassostrea gigas* Thunberg) during their spat rearing. *Water Research* **28**(1), 219–231.
- Anonymous (1996) Eaux marines — Pollutions par immersion, Section II: Disposition prises sur le plan national. Sous-Section II: Normes de rejets. *Lamy Environnement — L'eau*. © Lamy S.A., Décembre 1996, 53062.
- Auernheimer, C., Chinchon, S. and Pina, J. A. (1996) Lead pollution in bivalve shells. Mar Menor, Spain. *Archives of Science, Geneva* **49**(3), 87–98.
- Augier, H., Ramonda, G., Rolland, J. and Santimone, M. (1992) Study of geographical and seasonal metal contents variation in different part in the edible sea urchin, *Paracentrotus lividus* (Lamarck), from three provincial test areas. *Review of Oceanographic Media* **75**, 107–108.
- Bordin, G., McCourt, J., Cordeiro Raposo, F. and Rodriguez, A. (1996) Trace metals in the marine bivalve *Macoma balthica* in the Westerschelde estuary, The Netherlands. Part 3: Variability of the role of the cytosol in metal uptake by the clams. *The Science of the Total Environment* **180**, 241–255.
- Bourg, A. M. (1987) Trace metal absorption modelling and particle-water interactions in estuarine environments. *Continental Shelf Research* **7**, 1319–1332.
- Broman, D., Lundbergh, I. and Näf, C. (1994) Spatial and seasonal variation of major and trace elements in settling particulate matter in an estuarine-like archipelago area in the northern Baltic Proper. *Environmental Pollution* **85**, 243–257.
- Chapman, P. M. and Morgan, J. D. (1983) Sediment bioassay with oyster larvae. *Bulletin of Environmental Contamination and Toxicology* **31**, 438–440.
- Darby, D. A., Adams, D. D. and Nivens, W. T. (1986) Early sediment changes and element mobilization in man-made estuarine marsh. In *Sediment and Water Interaction*, ed. P. G. Sly, pp. 343–351. Springer Verlag, New York.
- Davis, H. C. (1960) Effect of turbidity producing substance in seawater on eggs and larvae of the clam [*Venus (Merceneria) merceneria*]. *Biological Bulletin* **118**, 48–54.
- Davis, H. C. and Hidu, H. (1969) Effects of turbidity producing substances in seawater on eggs and larvae of three genera of bivalve mollusks. *The Veliger* **11**, 316–323.
- de Moreno, J. E. A., Gerpe, M. S., Moreno, V. J. and Vodopivec, C. (1997) Heavy metals in Antarctic organisms. *Polar Biology* **17**, 131–140.
- Depledge, M. H., Forbes, T. L. and Forbes, V. E. (1993) Evaluation of cadmium, copper, zinc, and iron concentrations and tissue

TABLE 6

Concentrations of total hydrocarbons and two PCB congeners (µg g<sup>-1</sup>) in three tested sediments with different global GEODE levels.

	<2Md	2Md<4Md	>4Md
Total PAH	196.5	1897.5	2715
Arochlor 1254	12	25	45
Arochlor 1260	14	11.5	50

- distributions in the benthic crab, *Dorippe granulata* (De Haan, 1841) from Tolo Harbour, Hong Kong. *Environmental Pollution* **81**, 15–19.
- Ettajani, H., Amiard-Triquet, C. and Amiard, J.-C. (1992) Etude expérimentale du transfert de deux éléments traces (Ag, Cu) dans une chaîne trophique marine: eau-particules (sédiment naturel, microalgue)-mollusque filtreurs (*Crassostrea gigas* Thunberg). *Water, Air and Soil Pollution* **65**, 215–236.
- Förstner, U. (1989) Environmental factors controlling the uptake and release of organic and inorganic pollutant burden. In *Proceedings of the International Seminar on the Environmental Aspects of Dredging Activities*, Nantes, France, pp. 33–47.
- Fowler, S. W. (1986) Trace metals monitoring of pelagic organisms from the open Mediterranean Sea. *Environmental Monitoring and Assessment* **7**, 59–78.
- His, E. and Robert, R. (1985) Développement des végétaux de *Crassostrea gigas* dans le bassin d'Arcachon. Etudes sur les mortalités larvaires. *Rev. Trav. Inst. Pêches Marit.* **47**(1&2), 63–88.
- His, E. and Robert, R. (1986) Utilisation des élevages larvaires de *Crassostrea gigas* en écotoxicologie marine. *Haliois* **15**, 301–308.
- Izquierdo, C., Usero, J. and Gracia, I. (1997) Speciation of heavy metals in sediments from salt marshes on the southern Atlantic coast of Spain. *Marine Pollution Bulletin* **34**(2), 123–128.
- Kannan, K., Yasunaga, Y., Iwata, H., Ichihashi, H., Tanabe, S. and Tatsukawa, R. (1995) Concentrations of heavy metals, organochlorines and organotins in Horseshoe crab, *Tachypleus tridentatus*, from Japanese coastal waters. *Archives of Environmental Contamination and Toxicology* **28**, 40–47.
- Kersten, M. and Kröncke, I. (1971) Bioavailability of lead in North Sea sediments. *Helgoländer Meeresunters.* **1991**, **45**, 403–409.
- Kobayashi, N. Fertilized sea urchin eggs as indicator material for marine pollution bioassay, preliminary experiments. *Publications of Seto Marine Biology Laboratory* **21**, 377–391.
- Meador, J. P., Ross, B. D., Dinnel, P. A. and Picquelle, S. J. (1990) An analysis of the relationship between a sand-dollar embryo elutriate assay and sediment contaminants from stations in an urban embayment of Puget sound, Washington. *Marine Environmental Research* **30**, 251–272.
- Melzian, B. D. (1989) Toxicity assessment of dredged materials: acute and chronic toxicity as determined by bioassays and bioaccumulation tests. In *Proceedings of the International Seminar on the Environmental Aspects of Dredging Activities*, Nantes, France, pp. 49–64.
- Michaels, A. F. and Flegal, A. R. (1990) Lead in marine planktonic organisms and pelagic food webs. *Limnology and Oceanography* **35**(2), 287–295.
- Miramand, P., Bentley, D., Fichet, D., Caurant, F. and Guary, J.-C. (1996) Concentrations en métaux lourds (Cd, Cu, Pb, Zn) observées dans différents maillons du réseau trophique pélagique dans l'estuaire de la Seine. Programme scientifique Seine-Aval, Thème édifices biologiques, Rapport 1995/Fin 4, Rouen, pp. 121–129.
- Morisson, H. A., Gobas, F. A. P. C., Lazar, R. and Haffner, G. D. (1996) Development and verification of a bioaccumulation model for organic contaminants in benthic invertebrates. *Environmental Science and Technology* **30**, 3377–3384.
- Okubo, K. and Okubo, T. (1962) Study on the bioassay method for the evaluation of the water pollution. Use of the fertilized eggs of sea urchins and bivalves. *Bulletin of Tokai Region Fisheries Research Laboratory* **32**, 131–140.
- Pagano, G. and Romaña, L. A. (1991) Bioassay on the embryo and sperm of sea urchins monitoring marine pollution: a review. *Oceanis* **17**(4), 367–381.
- Pitts, L. C. and Wallace, G. T. (1994) Lead deposition in the shell of the bivalve, *Mya arenaria*: an indicator of dissolved lead in seawater. *Estuary and Coastal Shelf Science* **39**, 93–104.
- Puente, X., Villares, R., Carral, E. and Carballeira, A. (1996) Nacreous shell of *Mytilus galloprovincialis* as a biomonitor of heavy metal pollution in Galiza (NW Spain). *The Science of the Total Environment* **183**, 205–211.
- Radenac, G. (1996) Etude de l'impact biologique d'un rejet de dragage: suivi in situ de la croissance, des concentrations métalliques et de l'activité acétylcholinestérase de *Mytilus edulis* (Linné) et expérimentation in vitro sur l'embryogénèse de *Crassostrea gigas*. Thèse de doctorat, Université de la Rochelle.
- Radenac, G., Miramand, P. and Tardy, J. (1997) Search for impact of a dredged material disposal site on growth and metal contamination of *Mytilus edulis* (L.) in Charente-Maritime (France). *Marine Pollution Bulletin* (in press).
- RNO (1993) Surveillance du milieu marin. Travaux du Réseau National d'observation, 1993 edn. IFREMER et Ministère de l'Environnement.
- Robbe, D. (1984) Interprétation des teneurs en éléments métalliques associés aux sédiments. Rapport des laboratoires, série: environnement et génie urbain EG-1.
- Rule, J. H. (1985) Chemical extractions of heavy metals in sediments as related to metal uptake by grass shrimp (*Palaemonetes pugio*) and clam (*Merceneria merceneria*). *Archives of Environmental Contamination and Toxicology* **14**, 749–757.
- Rule, J. H. and Alden, R. W. (1990) Cadmium bioavailability to three estuarine animals in relation to geochemical fractions to sediment. *Archives of Environmental Contamination and Toxicology* **19**, 878–885.
- Saiz-Salinas, J. I., Ruiz, J. M. and Frances-Zubillaga, G. (1996) Heavy metal levels in intertidal sediments and biota from the Bidasoa Estuary. *Marine Pollution Bulletin* **32**(1), 69–71.
- Salomon, W. and Förstner, U. (1984) *Metal in the Hydrocycle*. Springer-Verlag, Berlin.
- Slotton, D. G. and Reuter, J. E. (1995) Heavy metals in intact and resuspended sediment of a California Reservoir, with emphasis on potential bioavailability of copper and zinc. *Marine and Freshwater Research* **46**, 257–265.
- Steimle, F. W., Zdanowicz, S., Cunneff, S. L. and Terranova, R. (1994) Trace metal concentrations in common benthic macrofaunal prey from the New York Bight apex. *Marine Pollution Bulletin* **28**(12), 760–765.
- Thomann, R. V., Mahony, J. D. and Mueller, R. (1995) Steady-state model of biota sediment accumulation for metals in two marine bivalves. *Environmental Toxicology and Chemistry* **14**(11), 1989–1998.
- Thomson, J. D. (1982) Metal concentration changes in growing pacific oyster, *Crassostrea gigas*, cultivated in Tasmania. *Australian Marine Biology* **67**, 135–142.
- Van Der Burgt, C. (1994) Dealing with contaminated dredged materials with reference to the Oslo convention 1972 and the new Paris convention 1992. *Marine Pollution Bulletin* **29**(6–12), 296–299.
- Vanahaeccke, I., Persoone, G., Claus, C. and Sorgeloss, P. (1980) Research on the development of a short term standard toxicity test with *Artemia nauplii* in the brine shrimp *Artemia* — methodology, genetics, radiobiology, toxicology. *Methodology, Genetics, Radiobiology, Toxicology, Universal Press* **1**, 263–285.
- Warnau, M., Ledent, G., Temara, A., Jangoux, M. and Dubois, P. (1995) Experimental cadmium contamination of the echinoid *Paracentrotus lividus*: influence of the exposure mode and distribution of the metal in the organism. *Marine Ecology Progress Series* **116**, 117–124.
- Woelke, C. E. (1967) Measurement of water quality with the Pacific oyster embryo bioassay. *Water Quality Criteria*. ASTM, STP 416, American Society of Testing Materials, pp. 112–120.
- Woelke, C. E. (1972) Development of a receiving water quality bioassay criterion based on the 24-hours Pacific oyster (*Crassostrea gigas*) embryo. Technical Report 9, Washington Department of Fisheries, Olympia, WA.
- Wollast, R. (1989) Physico-chemical models of marine sediment. In *Proceedings of the International Seminar on the Environmental Aspects of Dredging Activities*, Nantes, France, pp. 191–204.
- Ying, W. (1993) Accumulation and regulation of heavy metals by the intertidal snail *Pollicines sordidus*. *Marine Biology (Germany)* **116**, 417.